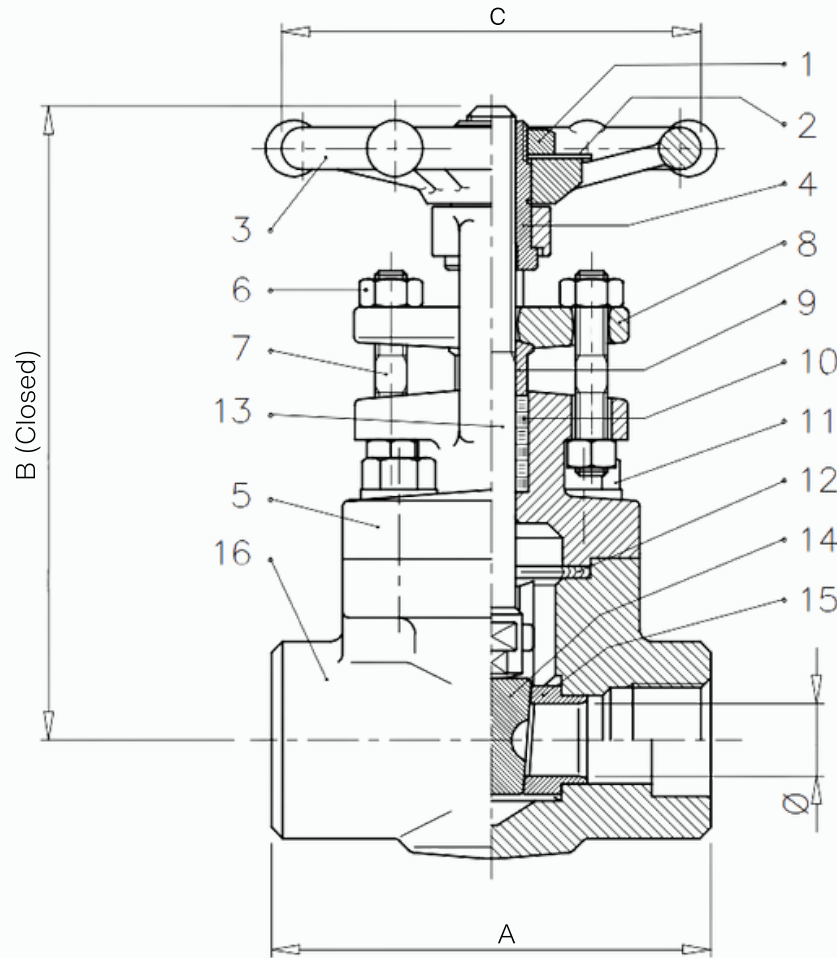


BILL OF MATERIALS



NO.	PARTS NAME	MATERIAL	QTY	NO.	PARTS NAME	MATERIAL	QTY
1	NUT	CARBON STEEL	1	9	PACKING GLAND	ASTM A479 TP316/L	1
2	NAMEPLATE	ALUMINIUM	1	10	PACKING	GTJ+TE.GRAPHITE	1
3	HANDWHEEL	ASTM A105N	1	11	BOLTS	ASTM A193 B7M	4
4	YOKE SLEEVE	AISI416	1	12	GASKET	F316+GRAPHITE	1
5	BONNET	ASTM A105N	1	13	STEM	ASTM A479 TP410	1
6	GLAND NUT	ASTM A194 GR.2HM	4	14	WEDGE	ASTM A182 F6A CL. 2	1
7	GLAND STUD	ASTM A193 B7M	2	15	SEAT	ASTM A479 TP410 +ST.6	2
8	GLAND FLANGE	ASTM A105N	1	16	BODY	ASTM A105N	1

DESIGN STANDARDS

PRESSURE RATING	ANSI/ASME CLASS 800	VALVE TYPE	GATE VALVE
DESIGN	API 602 AND B16.34	CONSTRUCTION	OS&Y, BB, RB, NPT X SW
FACE TO FACE DIMENSION	ASME B16.10	TEST & INSPECTION	API 598 WITH API 6D DURATION
MARKING	MSS SP-25	WALL THICKNESS	API 600/ ASME B16.34
CERTIFICATION	EN10204, TYPE 3.1	NACE	MR 01-75 (INTERNAL WETTED PARTS) & MR 01-03.

SIZE	A	B (CLOSED)	C	Φ	WT(KG)	PRODUCT CODE
¾"	90	136.5 (CLOSED) RUN = 18	80	14	2.1	GABF8008TN6D020
1"	110	161 (CLOSED) RUN = 24.5	100	18	3.4	GABF8008TN6D025
1 ½"	127	210 (CLOSED) RUN = 36	140	29.5	6.35	GABF8008TN6D040

DESCRIPTION

20MM TO 40MM CLASS 800 GATE VALVE ASTM A105N OS&Y BB REDUCED BORE API TRIM 8 FULL STELLITE GRAPHITE PACKING SW GASKET A193 B7M FASTENERS SCREWED NPT X SOCKET WELD ENDS HANDWHEEL OPERATED API 602 ASME B16.34 API 598 TESTED API 6D DURATION NACE MR 01-75 & MR 01-03 INHERENTLY FIRESAFE